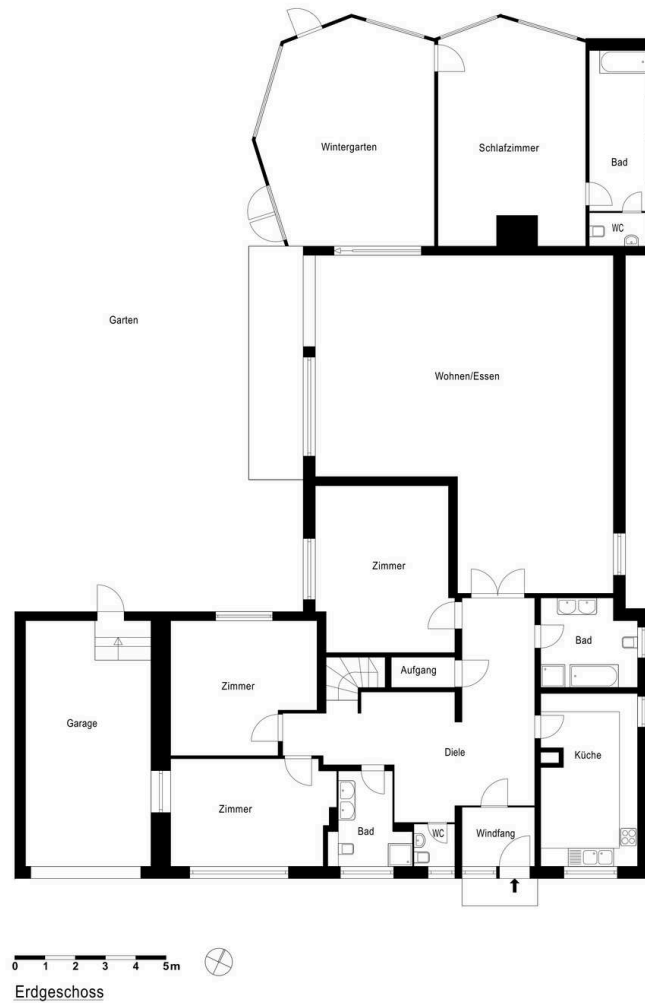


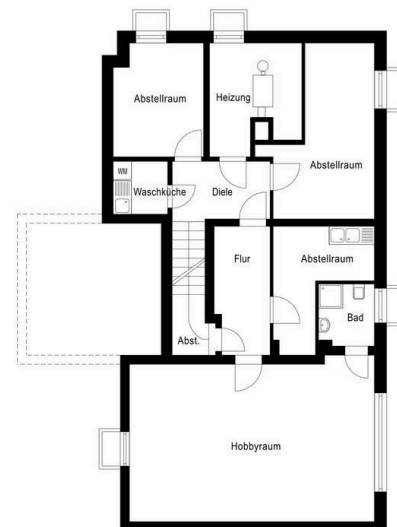
# Einfamilienhaus Schlachtensee

FLOOR PLANS

# Floor plan ground floor



# Floor plan basement



Kellergeschoss

# Disclaimer

The content of these documents provides general information. We may modify and supplement the information presented here at any time. Floor plans and measures featured in these documents are preliminary. The measures presented, in particular concerning the size of living space, are approximate measures. Within the realm of the building permit, we reserve the right, to make admissible amendments. Floor plans and measures, as well as size, number, layout and design of the windows can therefore deviate from the images in these documents and may vary due to structural adjustments. Only the condition after construction is decisive. Equally, the respective floor plans and measures within the different floors may deviate from each other. The illustrations of the design, the furnishings and facilities of the rooms, the house technology, devices and other objects serve explanatory services only. No warranties or indication of quality follows from the illustrations on this website. The illustrations in these documents serve advertising purposes only. They do not contain an offer to enter into an agreement.

Texts, images and graphics contained in these documents are protected by copyright. The reproduction, diversification or other usage of content or data, in particular the usage of texts, parts of texts or image material as well as the utilization of the logo without the prior written consent of the respective right's owner are prohibited.

# Contact

## ADDRESS

David Borck  
Immobilien-gesellschaft mbH  
Schlüterstraße 45  
10707 Berlin

## PHONE

Phone +49 (0)30 887 742 50  
Fax +49 (0)30 887 742 525

## MAIL

service@david-borck.de

## AUTHORIZED TO REPRESENT

Caren Rothmann and David Borck

## DISTRICT COURT OF BERLIN-CHARLOTTENBURG

HRB 127328 B

## SUPERVISORY AUTHORITY

District Office Berlin  
Charlottenburg-Wilmersdorf of Berlin,  
10617 Berlin  
Phone +49 (0)30 90 29 10  
Fax +49 (0)30 902 914 666

We are looking forward to meeting you!

