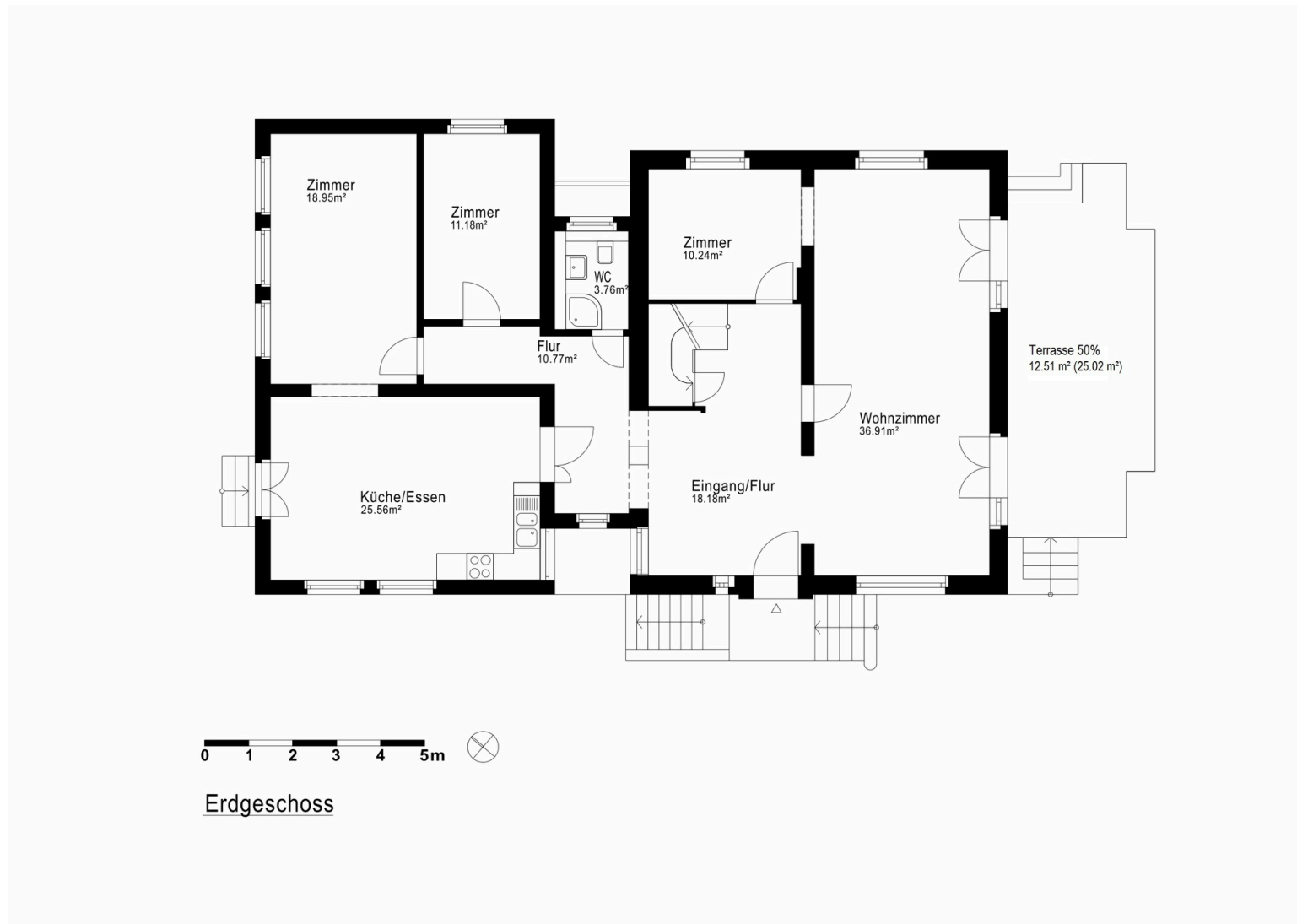


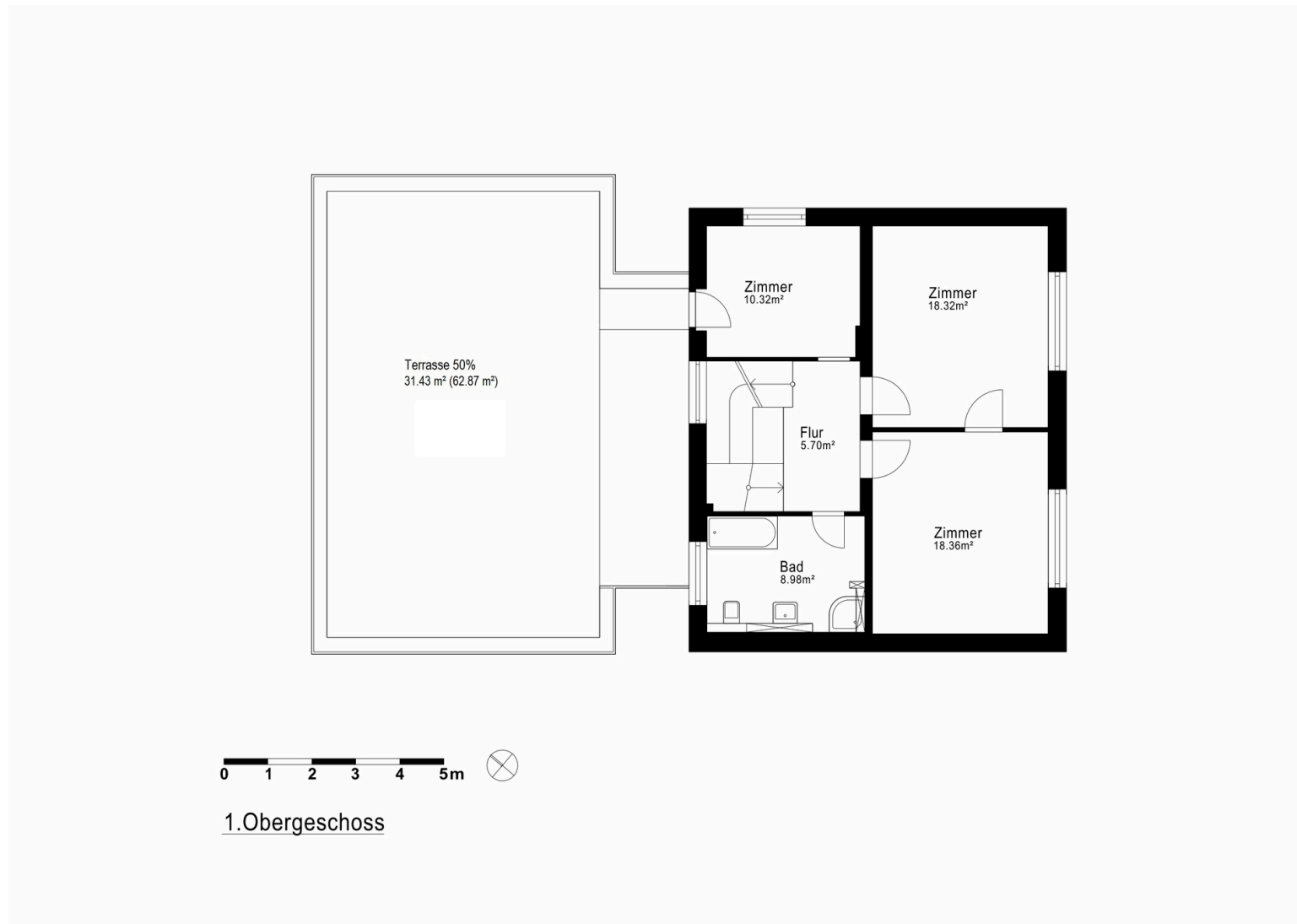
Einfamilienhaus Grunewald

FLOOR PLANS

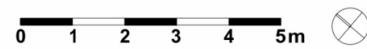
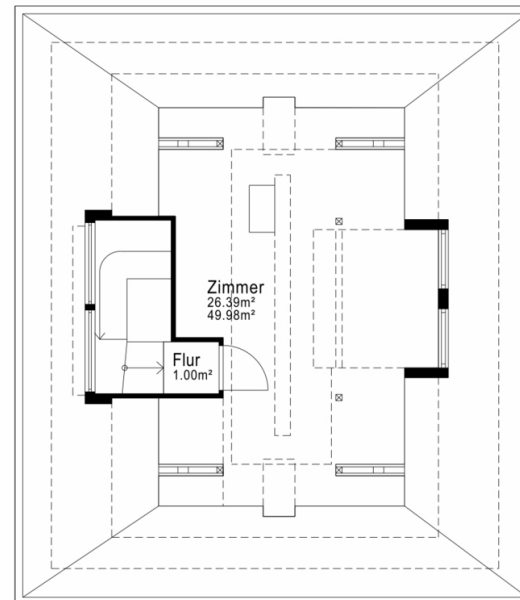
Floor Plan Ground Floor



Floor Plan First Floor

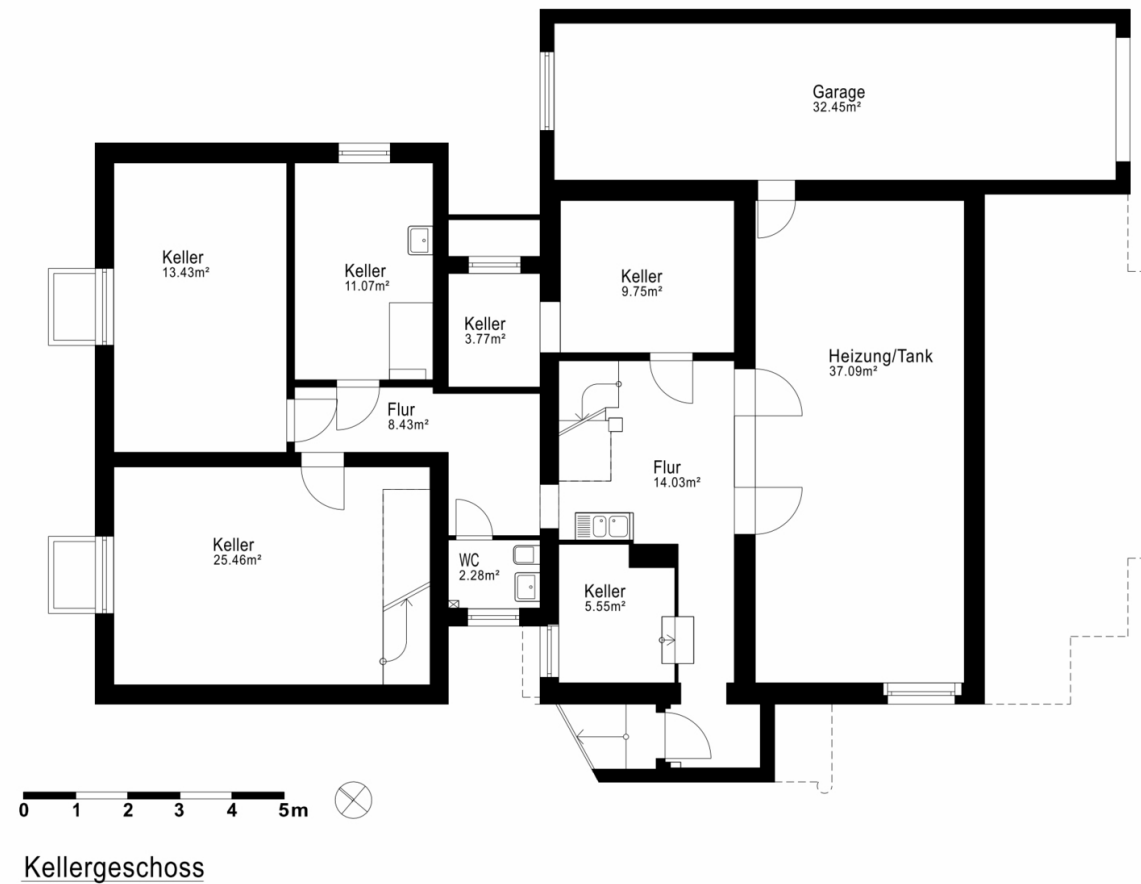


Floor Plan Attic



Dachgeschoss

Floor Plan Basement



Disclaimer

The content of these documents provides general information. We may modify and supplement the information presented here at any time. Floor plans and measures featured in these documents are preliminary. The measures presented, in particular concerning the size of living space, are approximate measures. Within the realm of the building permit, we reserve the right, to make admissible amendments. Floor plans and measures, as well as size, number, layout and design of the windows can therefore deviate from the images in these documents and may vary due to structural adjustments. Only the condition after construction is decisive. Equally, the respective floor plans and measures within the different floors may deviate from each other. The illustrations of the design, the furnishings and facilities of the rooms, the house technology, devices and other objects serve explanatory services only. No warranties or indication of quality follows from the illustrations on this website. The illustrations in these documents serve advertising purposes only. They do not contain an offer to enter into an agreement.

Texts, images and graphics contained in these documents are protected by copyright. The reproduction, diversification or other usage of content or data, in particular the usage of texts, parts of texts or image material as well as the utilization of the logo without the prior written consent of the respective right's owner are prohibited.

Contact

ADDRESS

David Borck
Immobilien-gesellschaft mbH
Schlüterstraße 45
10707 Berlin

PHONE

Phone +49 (0)30 887 742 50
Fax +49 (0)30 887 742 525

MAIL

service@david-borck.de

AUTHORIZED TO REPRESENT

Caren Rothmann and David Borck

DISTRICT COURT OF BERLIN-CHARLOTTENBURG

HRB 127328 B

SUPERVISORY AUTHORITY

District Office Berlin
Charlottenburg-Wilmersdorf of Berlin,
10617 Berlin
Phone +49 (0)30 90 29 10
Fax +49 (0)30 902 914 666

We are looking forward to meeting you!

